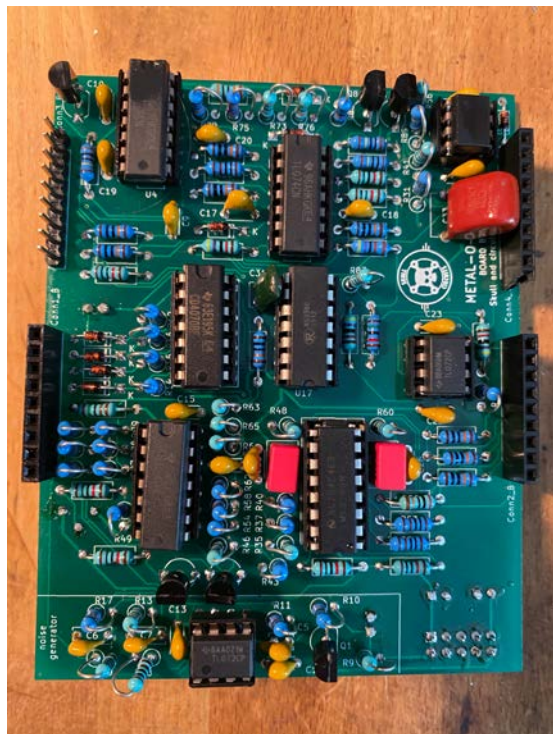


S&C - Metal-o-tron II

DIY Additional build notes.

Building

It's a fairly dense board, so pay close attention to where all elements go. A lot of resistors are placed upright and can be very hard to desolder if you make a mistake. Take some care with C33 (the big red 470nF one), it's a tight fit between both boards, leave a little bit of lead so you can tilt it slightly.



On Board A, the 2 timing capacitors are placed horizontally (see pic). this avoids having to buy expensive low profile 1uF and 10uF capacitors.



Calibration

There is only one trimmer on the board, so calibration is simple. Here is the procedure:

- Set the LPF to on, BPF and HPF to OFF
- Turn the Cutoff frequency knob completely counterclockwise (to it's lowest setting)
- Set the VCA toggle to OFF
- Open up the noise level about halfway
- Now you can adjust the trimmer. You will hear the filter closing, when it's completely closed, you're done.